

Universal Gauge for Megasquirt and MS3Pro

Thank you for your order!

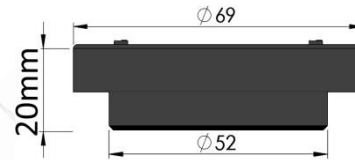
The customer satisfaction at Perfect Tuning is our biggest priority. If you have any questions, suggestions or issues do not hesitate to contact us at support@perfecttuning.net or on Facebook.

User manual and latest firmware version is available on the product page at

<http://perfecttuning.net>

Package includes:

- Perfect Tuning Universal Gauge
- 5 ft. cable
- Mounting bracket with 2x 4-40 screws



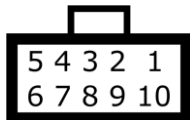
WARNING

Do not use longer screws than provided in the two rear mounting holes. Using too long screws can touch the circuit board inside and damage the gauge.

Opening the gauge will void the warranty.

Wiring

Always disconnect the vehicle battery when installing the gauge. Do not leave any wires not isolated. Always solder or crimp the wires and protect with heat shrink. Refer to the user manual to connect the sensors.



View when looking at the gauge.

Pin	Color	Function
1	Red	12v (+). Always install the gauge on a fused supply (3A)
2	Black	Vehicle Ground (-)
3	White	0-5v analog input 1
4	Yellow	0-5v analog input 2
5	Brown	CAN bus H
6	Purple	CAN bus L
7	Orange	0-5v analog input 3
8	Gray	Digital input
9	Blue	5v output
10	Green	Digital output. Connected to the ground when output is enabled.

Megasquirt 2 and 3 users: always double-check that you can bus wires are routed to SPR1 and SPR2 (to JS6 CANH and JS8 CANL inside the ECU). Refer to the MS3 hardware manual section 3.4.12 for more information.

ONE YEAR NON-TRANSFERRABLE LIMITED WARRANTY

PERFECT TUNING

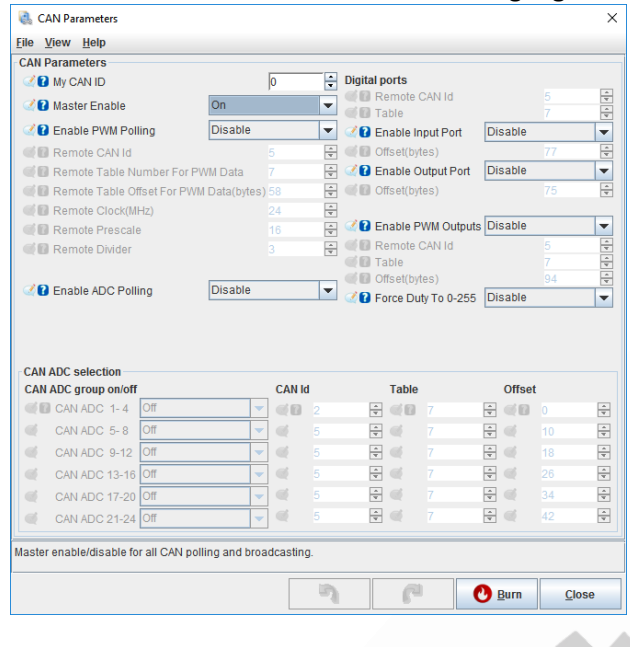
WWW.PERFECTTUNING.NET

www.perfecttuning.net

support@perfecttuning.net

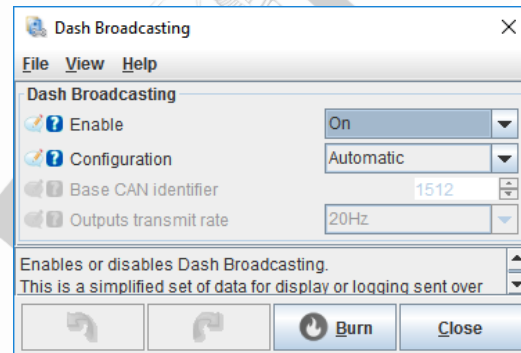
1-844-717-8822

The Megasquirt 3/MS3Pro ECU doesn't require any special configuration except to verify that the ECU Can ID is 0 in "CAN-bus/Test modes", "CAN Parameters" and Master Enable is at ON. Leave other settings disabled. Do not enable Dash broadcasting or CAN Real time data broadcasting with the MS3 firmware version on the gauge.

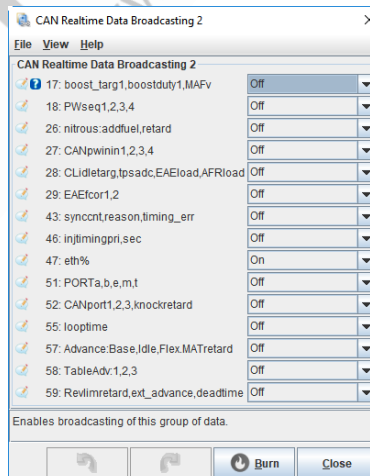
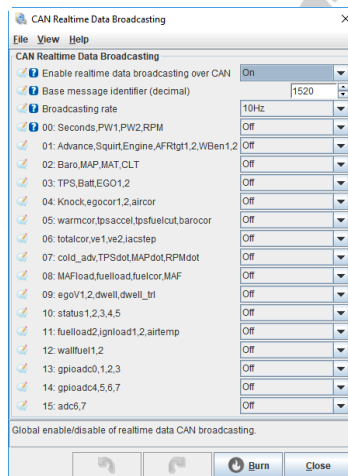


The Megasquirt 2 and Microsquirt requires a different firmware for the gauge. See the product page to download the firmware and program the gauge with it. The gauge will use dash broadcasting instead of requesting the data at the ECU directly.

First, open Tuner Studio and connect to your Megasquirt ECU. Go to CAN bus/Test modes menu and click on Dash broadcasting. Set to enabled and set the configuration to automatic (or based address of 1512 and transmit rate of 20 Hz).



To display ethanol content on Megasquirt 2 or Microsquirt, the "CAN Realtime Data Broadcasting" must be enabled. Go to "CAN bus/Test modes menu and select "CAN Realtime Data Broadcasting". Set "Enable realtime..." to ON and set the "Base message identifier" to



default value (1520). Then set a "Broadcasting rate" to 10 Hz. Then, click on "CAN bus/Test modes" again and select "CAN Realtime Data Broadcasting 2". Set value "47:eth%" to ON.